

FABRIC EXPANSION JOINT QUESTIONNAIRE



BundleTec - ENDÜSTRİYEL ÜRÜNLER MAKİNA SAN. TİC .LTD. ŞTİ. - İSTANBUL - TÜRKİYE

Contact _____
Fax _____
Telephone _____
Address _____

Order No. _____

Product No. _____

Ex-Joint Location
(Suction, Stack, etc.) _____

Flow Direction
(Up, Down, Horiz.) _____

Fluid Type
(Air, Flue gas, etc.) _____

Ambient Conditions
(Wet, dry, cold, etc.) _____

New/Replacement _____

Project Name/No. _____

Field Location _____

Facility Type _____

MOVEMENTS

inch mm

Axial Compression _____

Axial Elongation _____

Lateral _____
(Parallel to short side)

Lateral _____
(Parallel to long side)

Angular (°) _____

Torsion (°) _____

PRESSURE

inch W.C. mbar Pa

Design _____

Operation _____

TEMPERATURE

°F °C

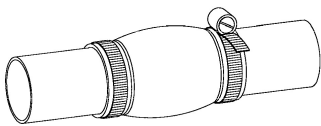
Working Peak _____

Peak Duration (h) _____

Ambient Max. _____

Ambient Min. _____

CONNECTION TYPE



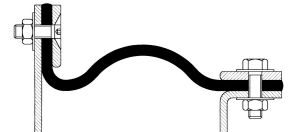
CLAMP / WORM DRIVE



FLANGED (U-TYPE)

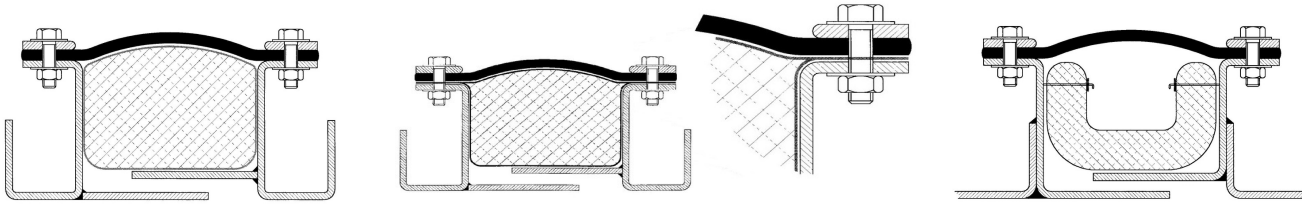


BELT (FLAT-TYPE)



COMBI TYPE

BOLSTER (INSULATION PILLOW)

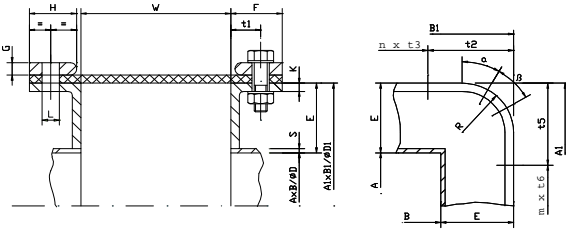


BLOCK

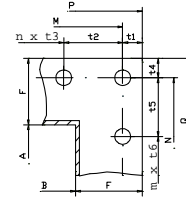
FLANGED

PINNED

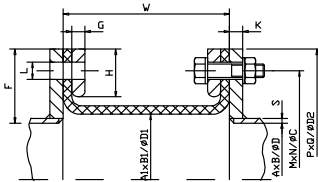
Belt Type connection



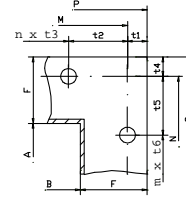
□ with hole in the edge edge



Flange connection



□ without hole in the edge



Rectangular

AxB	inner duct dimension	A
		B
A1xB1	inner dimension of the expansion joint	A1
		B1
E	set back	E
F	flange height/width	F
G	counter flange thickness	G
H	counter flange width	H
K	flange thickness	K
L	bolt hole diameter	L
MxN	hole line distance	M
		N
PxQ	outer dimension	P
		Q
R	radius	R
S	duct wall thickness	S
W	flange distance	W
t1	distance (round / rect.)	t1
t2	distance (only rect.)	t2
t3	distance (only rect.)	t3
m	number of holes	m
α	angle	α

Round

D	inner duct diameter	D
D1	inner diameter of the expansion joint	D1
E	set back	E
F	flange height/width	F
G	counter flange thickness	G
H	counter flange width	H
K	flange thickness	K
L	bolt hole diameter	L
C	bolt pitch	C
N	number of holes	N
D2	outer diameter	D2
S	duct wall thickness	S
W	flange distance	W
t4	distance (only rect.)	t4
t5	distance (only rect.)	t5
t6	distance (only rect.)	t6
n	number of holes	n
β	angle	β